

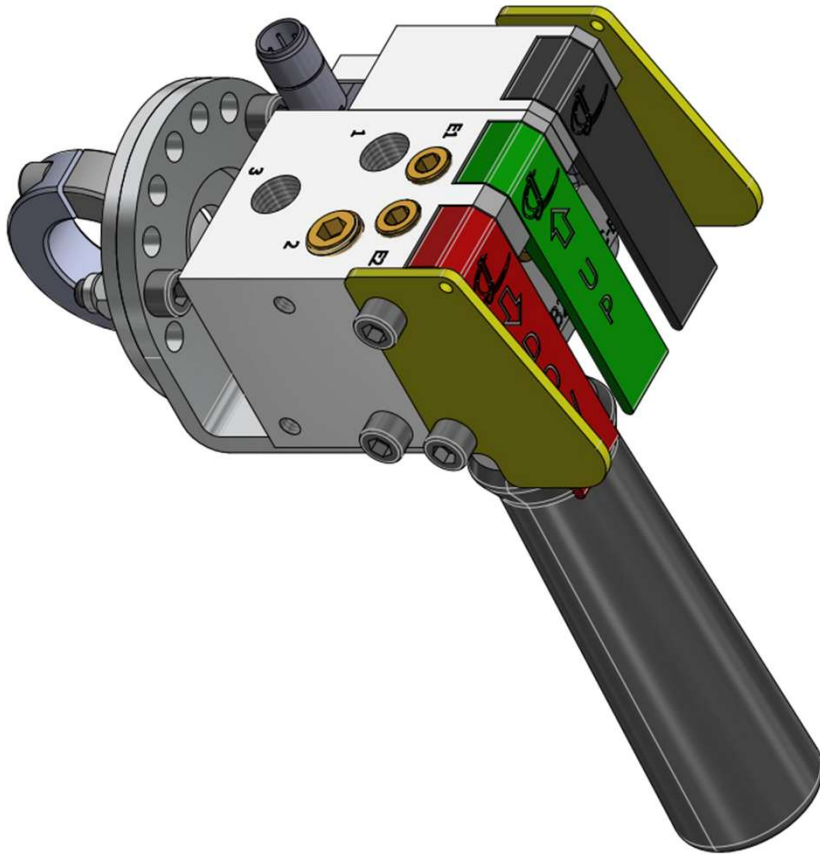
Pneumatic and Electric Pendant Control Handles

Introduction

General Information3

Control Handle Series

Pneumatic Control Pendants.....4
Electric and Combination Control Pendants.....6
Variable Speed & Safety Control Pendants.....8
Liftkon Control Pendants.....9
Control Options.....10
Hoist Manifold Blocks.....13
Control Handle Accessories.....16
Lever Marking and Ordering Information.....19
Pendant Ordering Instructions20



Jomat Industries Warranty Information

Jomat warrants that its products and parts will meet all applicable specifications, performance requirements and be free from defects in material and workmanship for one (1) year, from the date of invoice unless otherwise noted.

This warranty will not cover the negligence, misuse or defective operation caused by inadequate training of an operator, and or mis-adjustment or any alteration not approved by Jomat Industries. Jomat Industries obligation is limited to the replacement or repair of a Jomat product at a location designated by Jomat. The buyer is responsible for all associated internal reinstallation costs as well as freight charges to and from Jomat. Jomat Industries maximum liability will not exceed the contract price for a defective product.

Any modifications to a Jomat Product without written authorization from Jomat Industries will void warranty obligation.

Disclaimers: Other than set forth herein, no other expressed warranties, and no implied warranties, oral or written, including but not limited to the warranties of merchantability or fitness for a particular purpose, are made by Jomat Industries with respect to its products and all such warranties are hereby specifically disclaimed.

Jomat Industries shall not be liable under any circumstances for any incidental, special and/or consequential damages whatsoever, whether or not foreseeable, including but not limited to damages for lost profits and all such incidental, special and/or consequential damages are hereby also specifically disclaimed.

Jomat Industries will not be liable for any loss, injury or damage to persons or property, nor for damages of any kind resulting from failure or defective operation of any materials or equipment furnished hereunder.



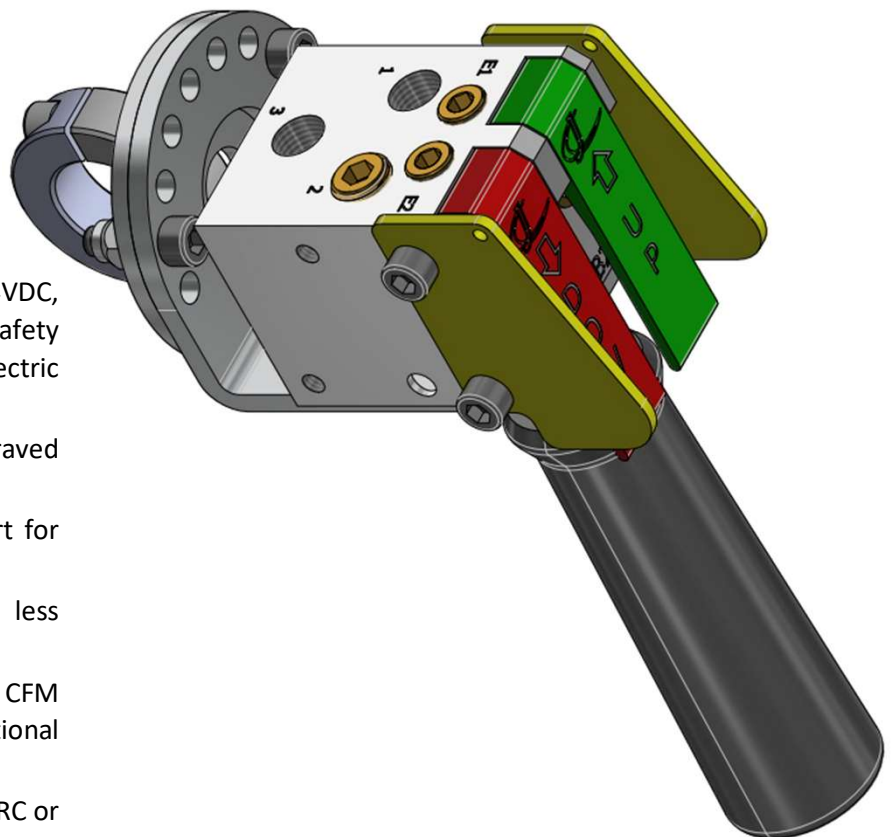
General Information

Jomat Industries Pendants

Jomat Industries line of pendants integrates function and versatility, designed to be both visually and economically appealing. A dual valve pneumatic block that can function as a 3-way double signal pilot or a 2-way front exhaust valve, is the heart of the system. Simple piping variations are all that is required to switch from one control function to the next. Single pneumatic 3-way blocks are also available that can be used on their own or can be stacked with other components for multi-function capabilities. Single electric 24VDC blocks are available and can be used independently or can be stacked with other components for multi-function capabilities. Single safety electric 24VDC blocks PLe rated are available and can be used independently or can be stacked with other components for multi-function capabilities as well. Dual and single electric variable speed control blocks are also available. Pneumatic and electric modules fit together seamlessly. Modular designs with interchangeable parts improve delivery time as well as service and maintenance requirements. It also allows easy selection of pendant parameters based on specific applications.

Features

- Dual and single button pneumatic (90 psi max) modules.
- Dual button pneumatic (90 psi max) modules function as Signal Pilot or Front Exhaust.
- Electric 24VDC single button modules can be stacked for multi-button applications
- Pneumatic (90 psi max), electric 24VDC, electric variable speed control, and safety electric 24VDC modules can be combined for multi-button applications.
- Pendants can be purchased fully assembled or as components.
- Modular assembly allows for easy conversion to new requirements in the field.
- A wide variety of accessories are available to customize pendants to the user's needs.



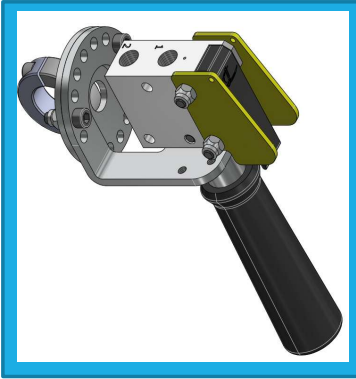
Benefits and Options

- Pneumatic (90 psi max), electric 24VDC, electric variable speed control, and safety electric 24VDC Pneumatic-Electric combinations are available.
- Levers can be customized with Engraved callouts per customer specifications.
- Ergonomic levers provide optimal comfort for the operator.
- Lever push force is less than 2lbs with less overall thumb reach.
- Dual Poppet valve provides 30% more CFM with a smoother control over conventional Pendants available on the market.
- 1/8" and 1/4" G Threads work with either RC or BSPT male threads.



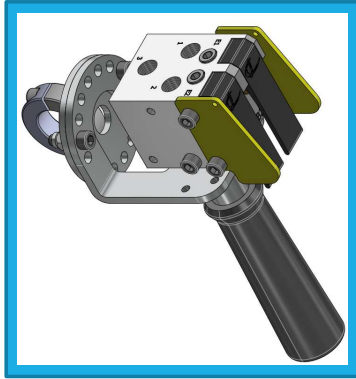
Pneumatic Control Pendants

Pneumatic (90 psi max) Control Handle Examples



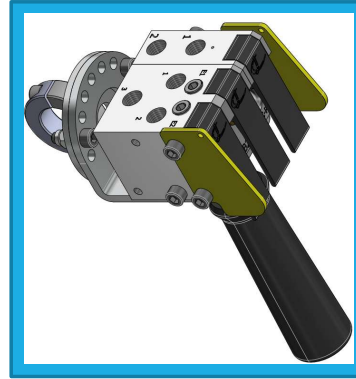
One (1) Button
Single Signal Pilot Pendant

Model #JP-P00C-STM (Shown)



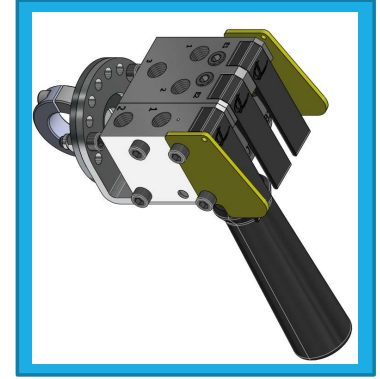
Two (2) Button
Double Signal Pilot Pendant

Model #JP-D00C-STM (Shown)



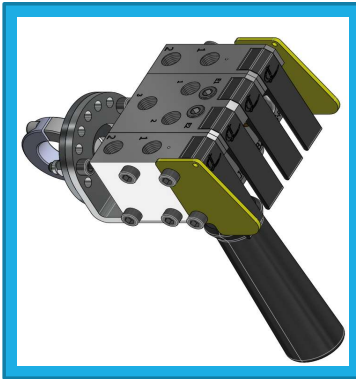
Three (3) Button
Double Signal Pilot w/Single
Signal Pilot on Right Pendant

Model #JP-DP00C-STM (Shown)



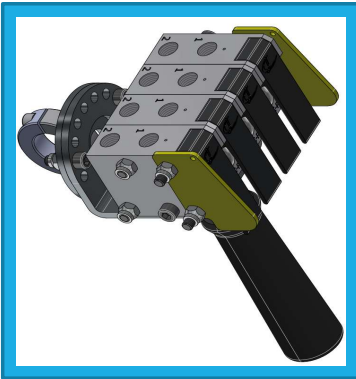
Three (3) Button
Double Signal Pilot w/Single
Signal Pilot on Left Pendant

Model #JP-PD00C-STM (Shown)



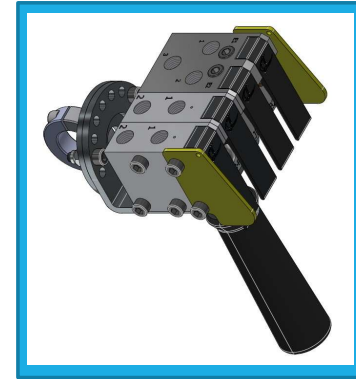
Four (4) Button
Double Signal Pilot w/Single
Signal Pilot on Both Sides
Pendant

Model #JP-PD0C-STM (Shown)



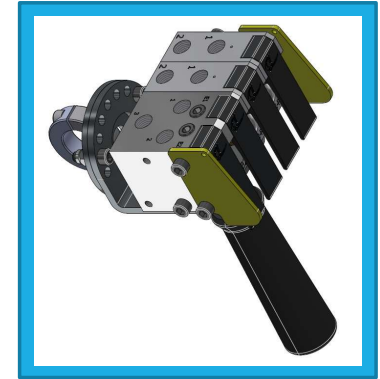
Four (4) Button
Quad Single Signal Pilot Pendant

Model #JP-PPPC-STM (Shown)



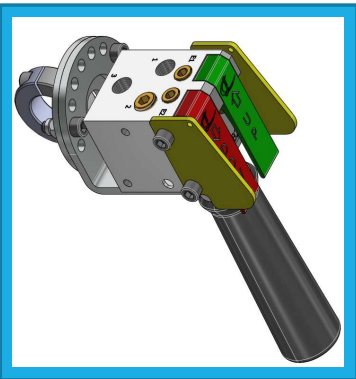
Four (4) Button
Double Signal Pilot with (2)
Single Signal Pilot on Left
Pendant

Model #JP-PPD0C-STM (Shown)



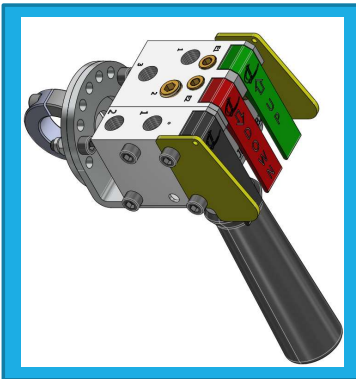
Four (4) Button
Double Signal Pilot with (2)
Single Signal Pilot on Right
Pendant

Model #JP-DPP0C-STM (Shown)



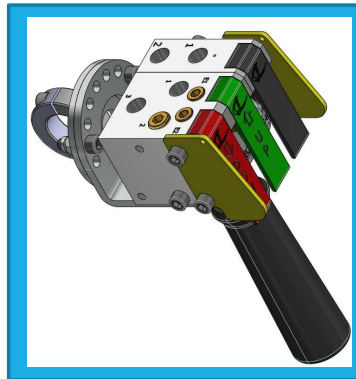
Two (2) Button
Double Front Exhaust (up &
down) Pendant

Model #JP-H00C-STM (Shown)



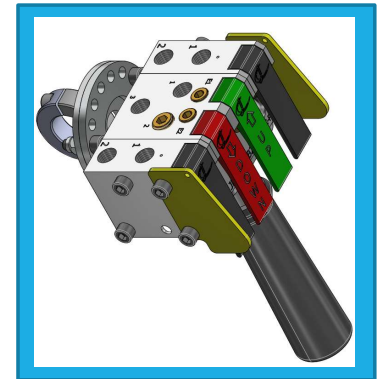
Three (3) Button
Double Front Exhaust (up &
down) w/Single Signal
Pilot on Left Pendant

Model #JP-PH00C-STM (Shown)



Three (3) Button
Double Front Exhaust (up &
down) w/Single Signal Pilot on
Right Pendant

Model #JP-HP00C-STM (Shown)



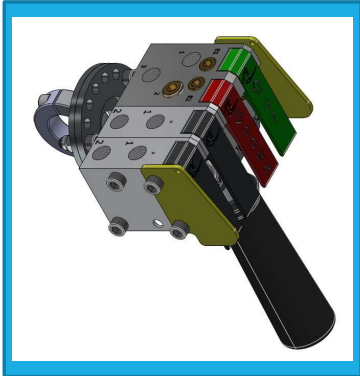
Four (4) Button
Double Front Exhaust (up &
down) w/Single Signal Pilot on
Both Sides Pendant

Model #JP-PHP0C-STM (Shown)



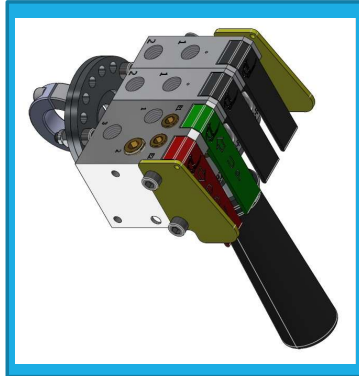
Pneumatic Control Pendants

Pneumatic (90 psi max) Control Handle Examples



Four (4) Button

Double Front Exhaust (up & down) with (2) Single Signal Pilot on Left Pendant
Model #JP-PPH0C-STM (Shown)



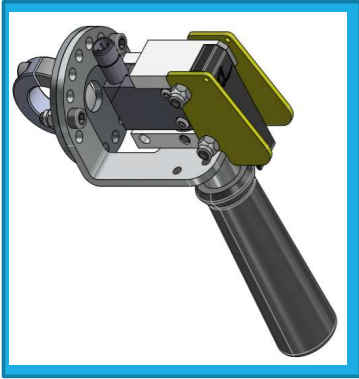
Four (4) Button

Double Front Exhaust (up & down) with (2) Single Signal Pilot on Right Pendant
Model #JP-HPP0C-STM (Shown)



Electric and Combination Control Pendants

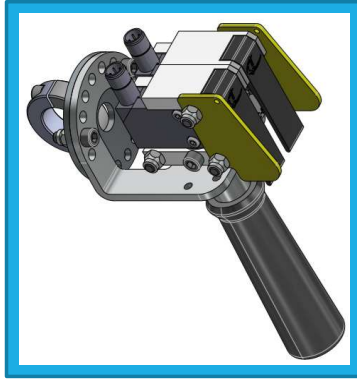
Electric 24VDC Control Handle Examples



One (1) Button

Single Electric 24VDC Switch
Block Pendant

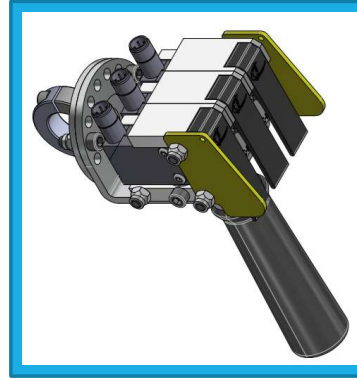
Model #JP-E000C-STM (Shown)



Two (2) Button

Double Electric 24VDC Switch
Block Pendant

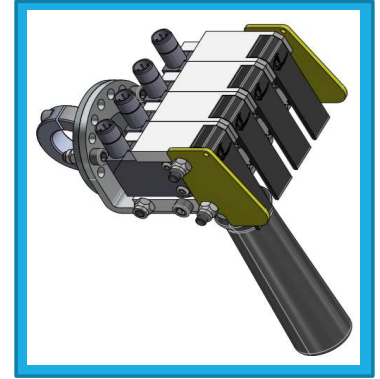
Model #JP-EE00C-STM (Shown)



Three (3) Button

Triple Electric 24VDC Switch
Block Pendant

Model #JP-EEE0C-STM (Shown)

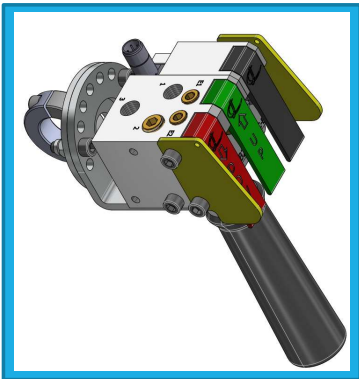


Four (4) Button

Quad Electric 24VDC Switch
Block Pendant

Model #JP-EEEEC-STM (Shown)

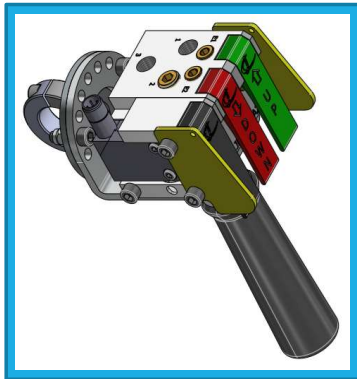
Electric 24VDC/Pneumatic (90 psi max) Control Handle Examples



Three (3) Button

Double Front Exhaust (up & down)
w/Single Electric 24VDC Switch on Right
Pendant

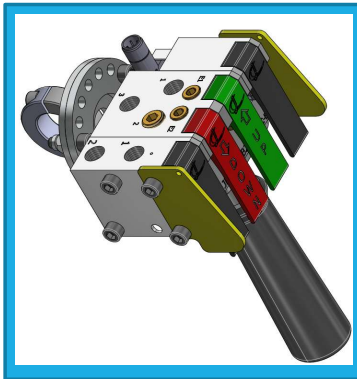
Model #JP-HE00C-STM (Shown)



Three (3) Button

Double Front Exhaust (up & down)
w/Single Electric 24VDC Switch on Left
Pendant

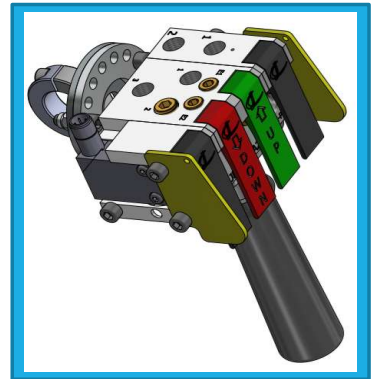
Model #JP-EH00C-STM (Shown)



Four (4) Button

Double Front Exhaust (up & down)
w/Single Signal Pilot on Left
Single Electric 24VDC Switch on Right
Pendant

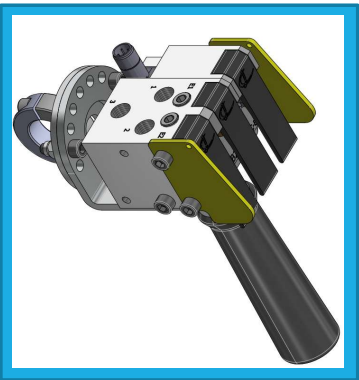
Model #JP-PHE0C-STM (Shown)



Four (4) Button

Double Front Exhaust (up & down)
w/Single Electric 24VDC Switch on Left
Single Signal Pilot on Right
Pendant

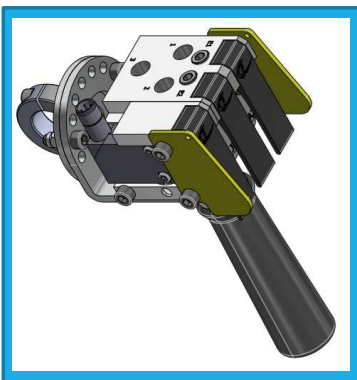
Model #JP-EHPOC-STM (Shown)



Three (3) Button

Double Signal Pilot w/Single
Electric 24VDC Switch on Right
Pendant

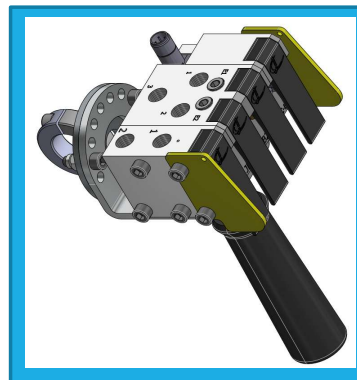
Model #JP-DE00C-STM (Shown)



Three (3) Button

Double Signal Pilot w/Single
Electric 24VDC Switch on Left
Pendant

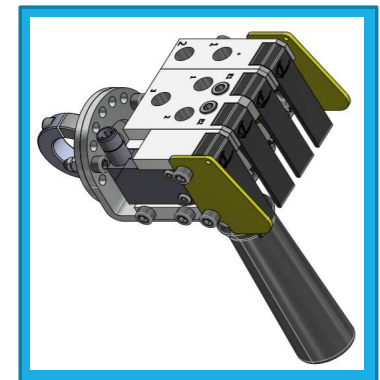
Model #JP-ED00C-STM (Shown)



Four (4) Button

Double Signal Pilot w/Single
Signal Pilot on Left Single Electric
24VDC Switch on Right Pendant

Model #JP-PDE0C-STM (Shown)



Four (4) Button

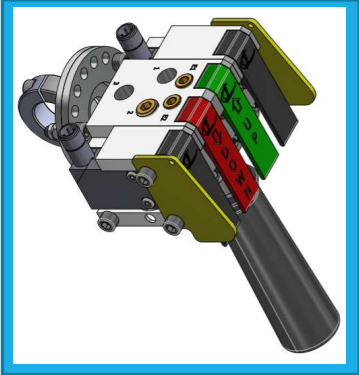
Double Signal Pilot w/Single Electric
24VDC Switch on Left & Single
Signal Pilot on Right Pendant

Model #JP-EDPOC-STM (Shown)



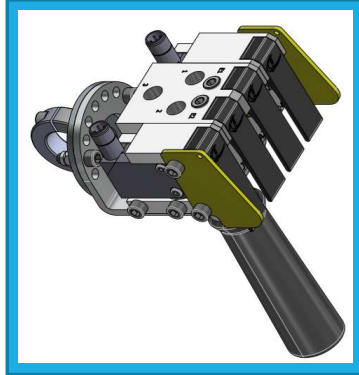
Electric and Combination Control Pendants

Electric 24VDC/Pneumatic (90 psi max) Control Handle Examples



Four (4) Button

Double Front Exhaust (up & down)w/Single Electric 24VDC Switch on Both Sides Pendant
Model #JP-EHE0C-STM (Shown)



Four (4) Button

Double Signal Pilot w/Single Electric 24VDC Switch on Both Sides Pendant
Model #JP-EDE0C-STM (Shown)



Dead Handle Pendant

Model #JP-0000C-STM (Shown)



Variable Speed and Safety Control Pendants

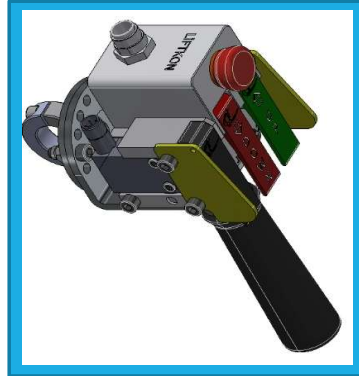
Electric 24VDC PWM Variable Speed Control Handle Examples



Two (2) Button

Double Variable Speed Electric Pendant

Model #JP-L000C-STM (Shown)



Three (3) Button

Double Variable Speed Electric w/Single Electric Switch on Left Pendant

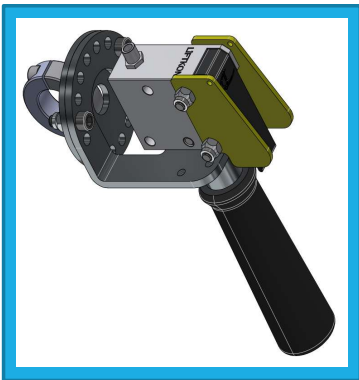
Model #JP-EL00C-STM (Shown)



Three (3) Button

Double Variable Speed Electric w/Single Signal Pilot on Left Pendant

Model #JP-PL00C-STM (Shown)



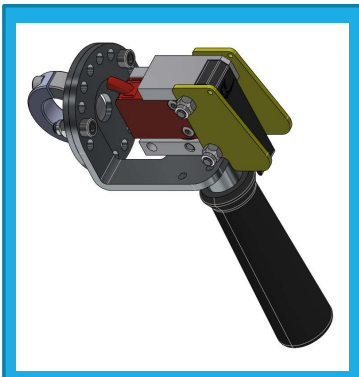
One (1) Button

Single Variable Speed Electric Pendant

Model #JP-M000C-STM (Shown)

The electric 24VDC PWM switches used in the variable speed blocks were originally developed for use with Liftkon servo hoists. The potentiometer in these switches can also be used to provide a variable speed output for other devices. These blocks can be incorporated into the Jomat Pendant naming system using the “L” (dual block w/e-stop) or “M” (single block) designation in the naming system.

Electric 24VDC PLe Safety Control Handle Example



One (1) Button

Single Safety Electric 24VDC PLe Pendant

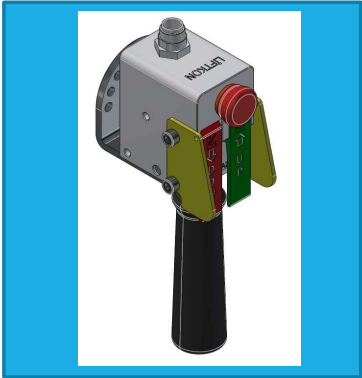
Model #JP-S000C-STM (Shown)

The safety electric 24VDC switches with dual outputs used in the safety pendant blocks conform to PLe per ISO 13849-1. These blocks can be incorporated into the Jomat Pendant naming system using the “S” designation in the naming system.



LIFTKON Control Pendants

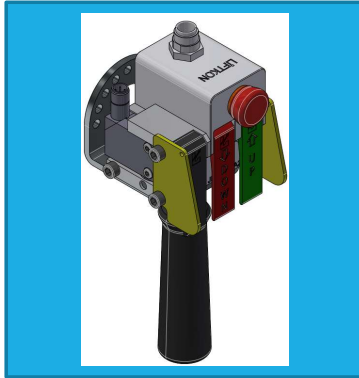
Electric 24VDC Control Handle Examples



Two (2) Button

Double Variable Speed Electric Pendant

Model #LP-L000C-ST0 (Shown)



Three (3) Button

Double Variable Speed Electric w/Single Electric Switch on Left Pendant

Model #LP-EL00C-ST0 (Shown)



Three (3) Button

Double Variable Speed Electric w/Single Signal Pilot on Left Pendant

Model #LP-PL00C-ST0 (Shown)



One (1) Button

Single Signal Pilot Pendant

Model #LP-P000C-ST0 (Shown)



One (1) Button

Single Electric 24VDC Switch Block Pendant

Model #LP-E000C-ST0 (Shown)



One (1) Button

Single Variable Speed Electric Pendant

Model #LP-M000C-ST0 (Shown)

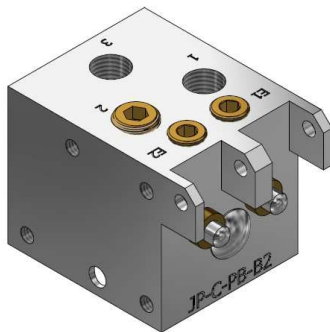
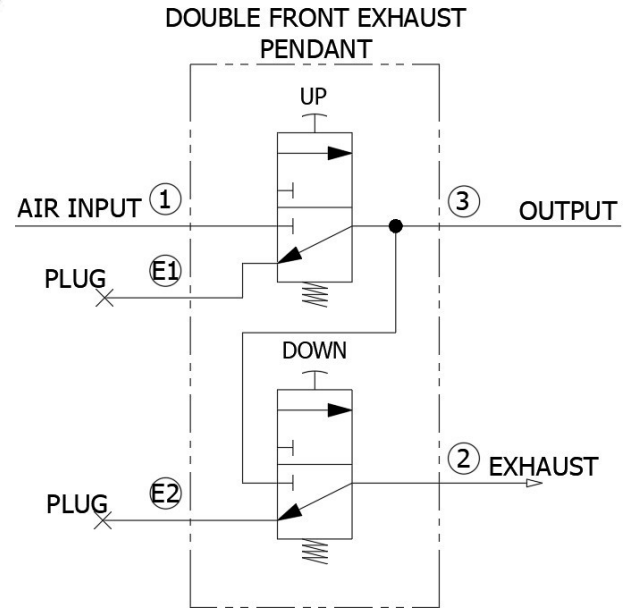
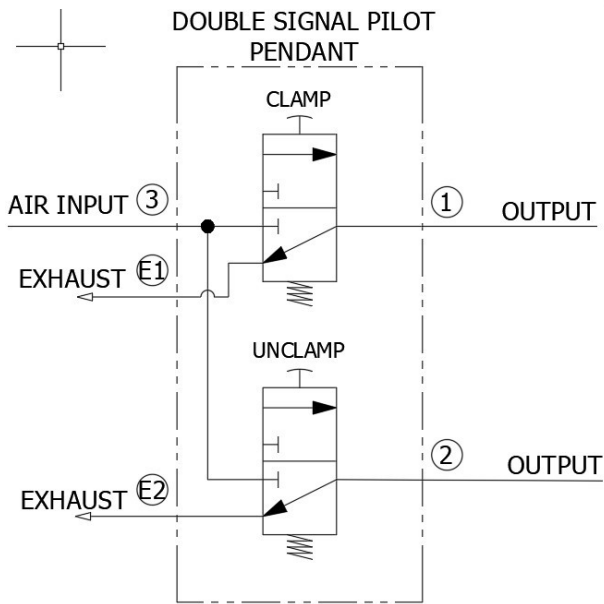
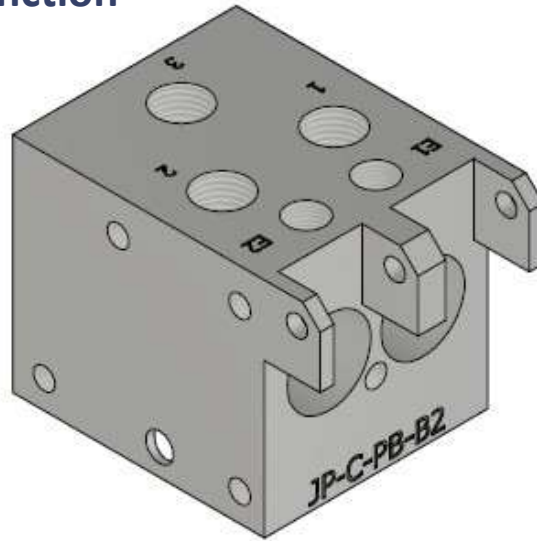


Control Options

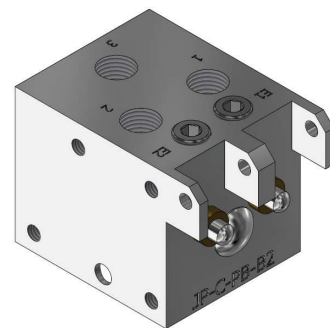
Functional and Versatile Control Options

Jomat Industries Control Handles are designed for functionality and versatility. Equipped for handling precision through a variety of possibilities.

Double Lever – Dual Function Valve Block



Double Signal Pilot Block
Model #JP-S-BCD1 (Shown)



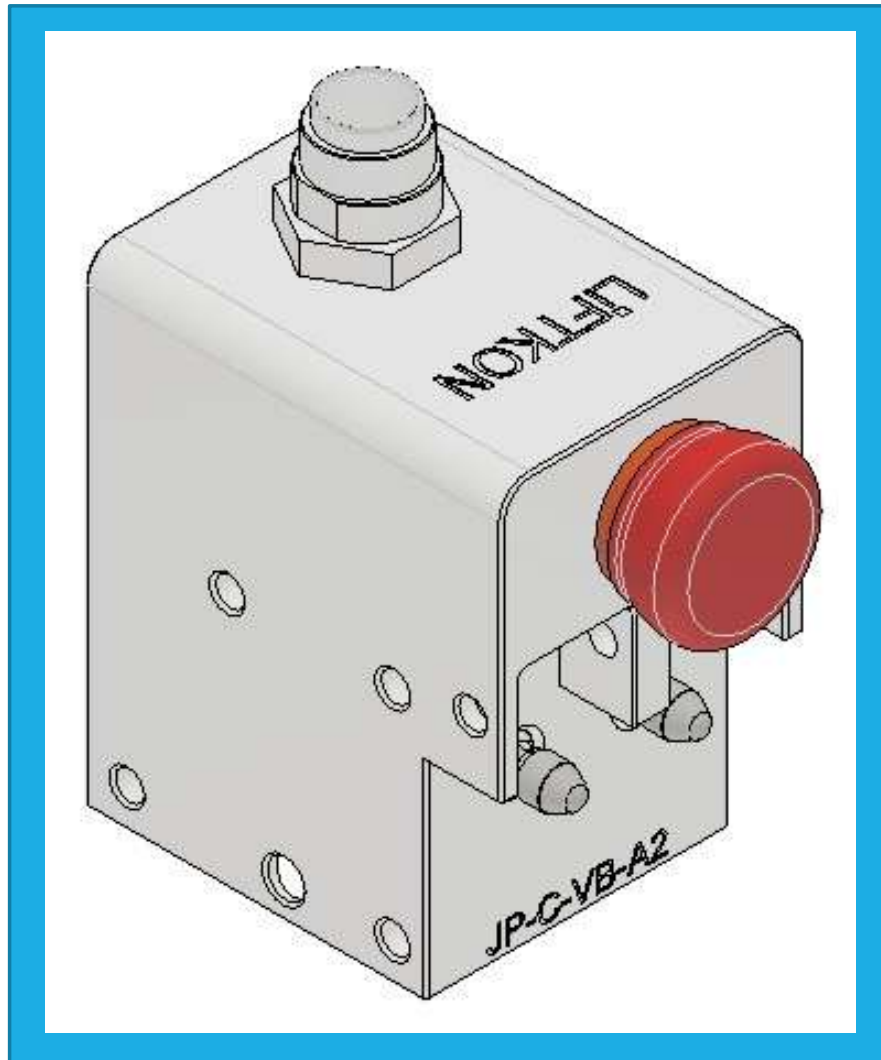
Double Front Exhaust (up & down) Block
Model #JP-S-BCH1 (Shown)



Control Options

Functional and Versatile Control Options

Double Lever – Variable Speed Electric Block



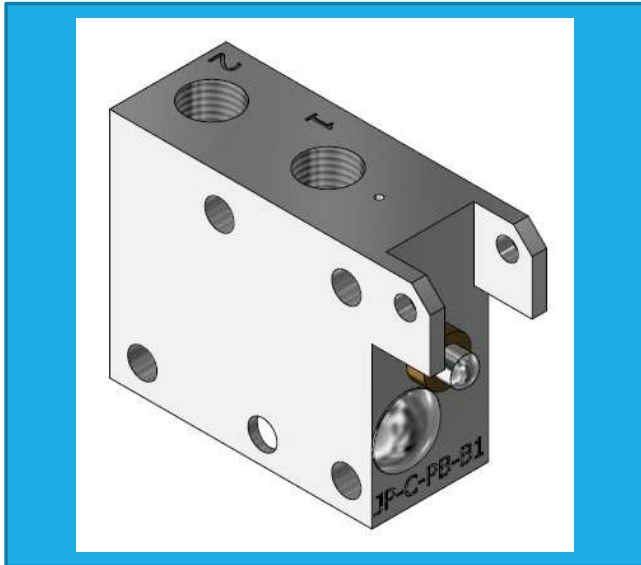
Jomat Double Lever Variable Speed Electric Block
without Lever
Model #JP-C-VB-A2 (Shown)



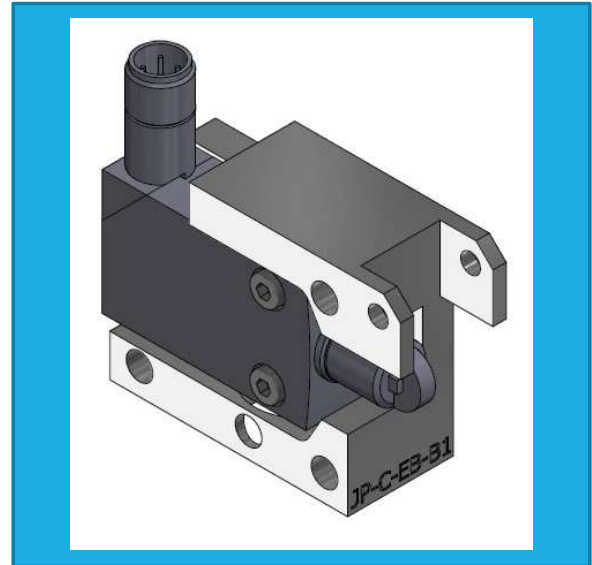
Control Options

Functional and Versatile Control Options

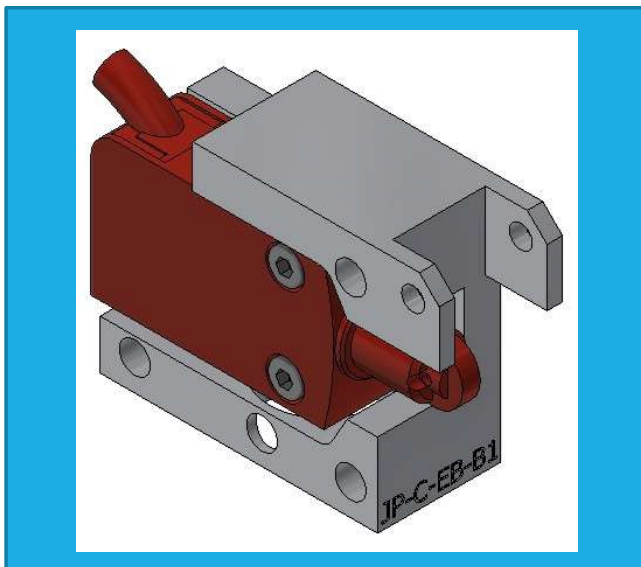
Single Lever Pendant Blocks



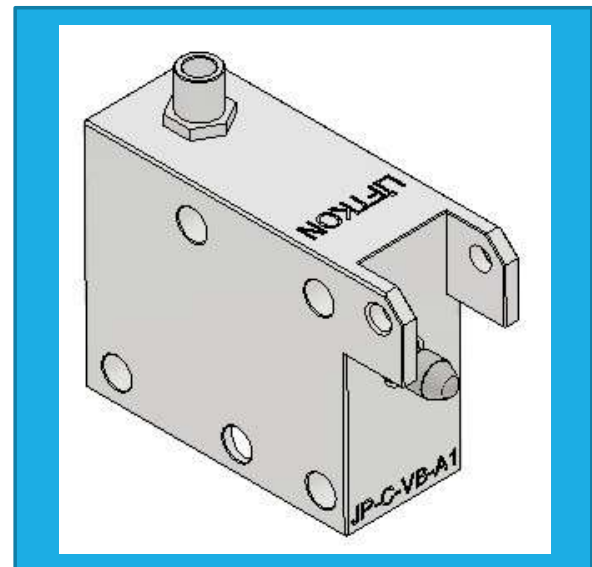
Jomat Single Signal Pilot Block
without Lever
Model #JP-S-BCP (Shown)



Jomat Single Electric 24VDC Block
without Lever
Model #JP-S-BCE (Shown)



Jomat Single Safety Electric 24VDC
PLe Block without Lever
Model #JP-S-BCS (Shown)



Jomat Single Variable Speed Electric Block
without Lever
Model #JP-C-VB-A1 (Shown)



Hoist Manifold Blocks

Functional and Versatile Control Options

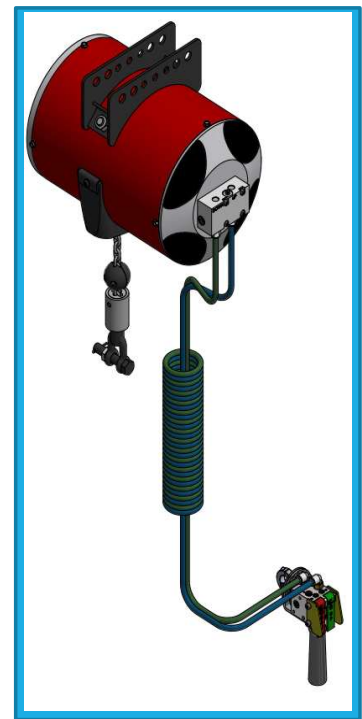
Hoist Manifold Blocks



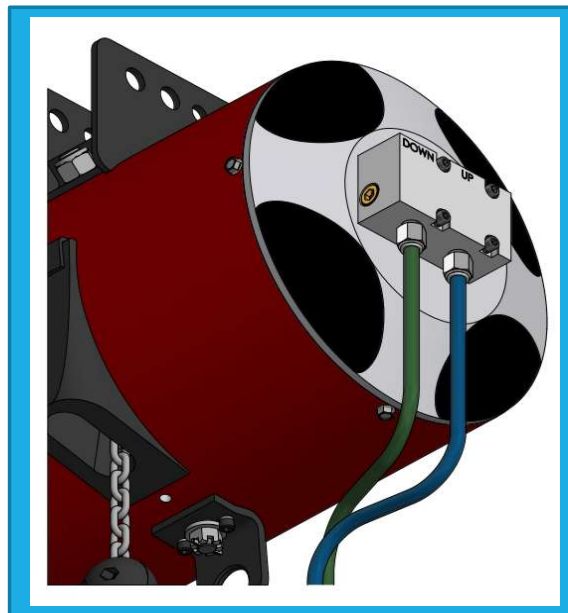
Manifold Block
With 10mm Straight Hose
and Control Pendant
Model #JH-M0H1P1A (Shown)

Features and Benefits

- Up/Down Flow Controls with Built in Safety Check for Air Supply
- Will work with most Industry Balancers
- 3/8" and 1/4" G thread ports work with either RC or BSPT male threads.
- Built in Balance Regulator



Manifold Block
With 10mm Coiled Hose
And Control Pendant
Model #JH-M0H2P1A (Shown)



Manifold Block
Model #JH-M00000A (Shown)



Hoist Manifold Blocks

Functional and Versatile Control Options

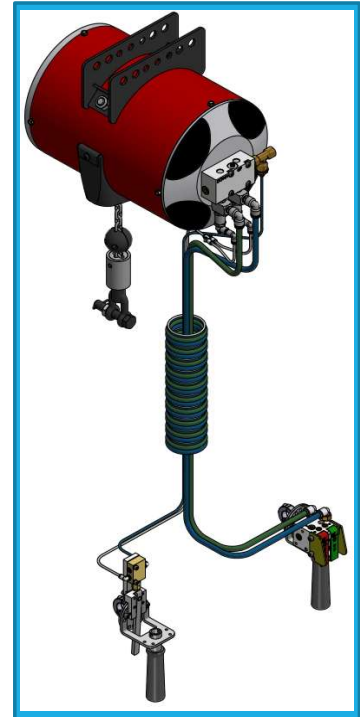
Hoist Manifold Blocks with P.O. Check Valve Kit



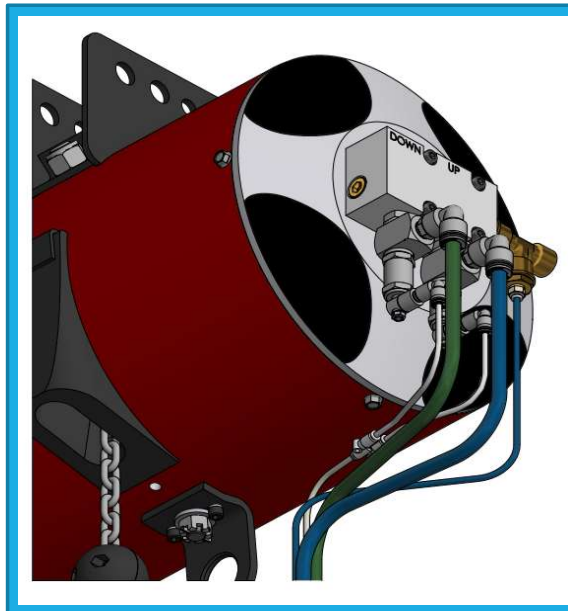
Manifold Block
10mm & 4mm Straight Hoses
and Control Pendants
Model #JH-MCH3P2A (Shown)

Features and Benefits

- Up/Down Flow Controls with Built in Safety Check for Air Supply
- P.O. Check Valves per FORD SPEC
- Will work with most Industry Balancers
- 3/8" and 1/4" G thread ports work with either RC or BSPT male threads.
- Built in Balance Regulator



Manifold Block
10mm & 4mm Coiled Hoses
and Control Pendants
Model #JH-MCH4P2A (Shown)



Manifold Block and P.O. Check Valve Kit
Model #JH-MC0000A (Shown)



Hoist Manifold Blocks

AIR BALANCER MANIFOLD SET UP

Quick Guide Set Up for Air Balancer Up/Down Control Manifold



BALANCE ADJUST



SPEED UP



SPEED DOWN



1 – Lift assist with no load

2 – Use a flat screwdriver to turn center screw clockwise until load raises.

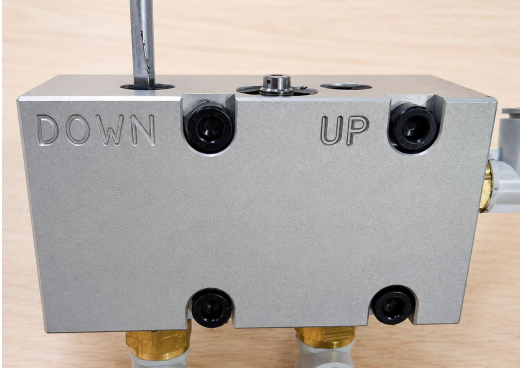
3 – Then turn counter-clockwise until the load stops raising.



1 – Lift assist with load

2 – Use a flat screwdriver to turn “UP” screw clockwise to decrease speed.

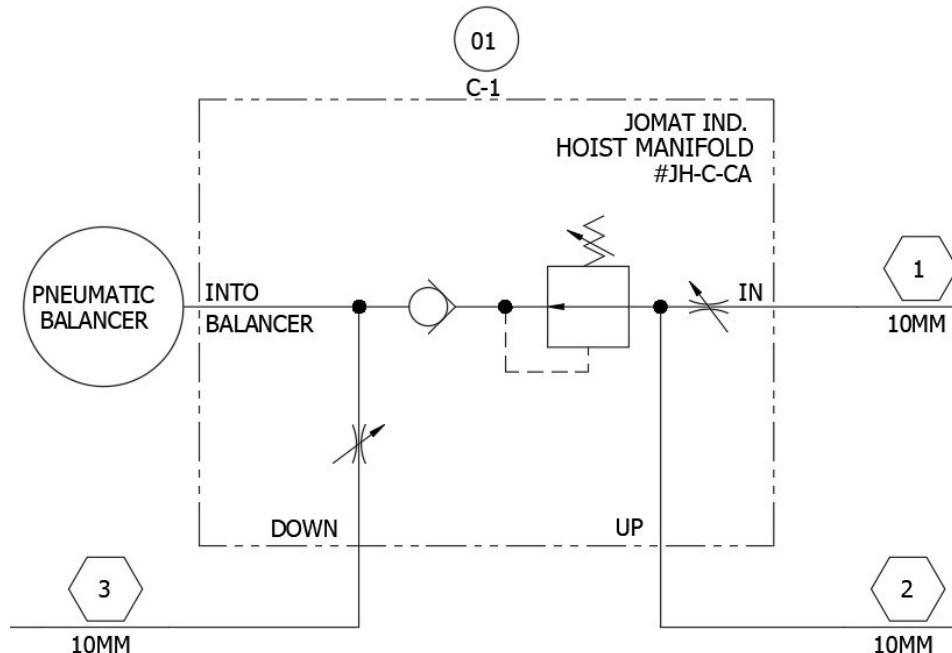
3 – Use a flat screwdriver to turn “UP” screw counter-clockwise to increase speed.



1 – Lift assist with load

2 – Use a flat screwdriver to turn “DOWN” screw clockwise to decrease speed.

3 – Use a flat screwdriver to turn “DOWN” screw counter-clockwise to increase speed.



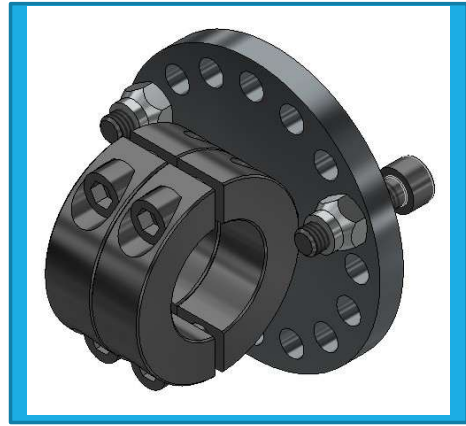
Control Handle Accessories



Universal 1" Handle Mount

- *Allows Control Handle to be mounted in a fixed position.
- * Hole Pattern Allows for 360° rotational mounting.

Model #JM-UHM-A11 (Shown)
STANDARD



Universal 1" Heavy Duty Handle Mount

- *Allows Control Handle to be mounted in a fixed position.
- * Hole Pattern Allows for 360° rotational mounting.

Model JM-UHM-A13 (Shown)
AVAILABLE ON REQUEST



Jomat Handle Assembly

- *Ergonomic Design to assist operator's Grip
- *Allows for a rotational position of the handle around a vertical axis

Model #JP-S-BH (Shown)
STANDARD



Heavy Duty Handle Assembly

- *Heavy reinforced bracket can stand up to abuse in harsh environments
- *Allows use of all Jomat Pendant accessories

Model #JP-C-H-A2 (Shown)
AVAILABLE ON REQUEST



Ergonomic handle grip

- *Contours to operator's hand
- *Can be easily swapped out with standard grip

Model #JP-C-H-A6 (Shown)
AVAILABLE ON REQUEST



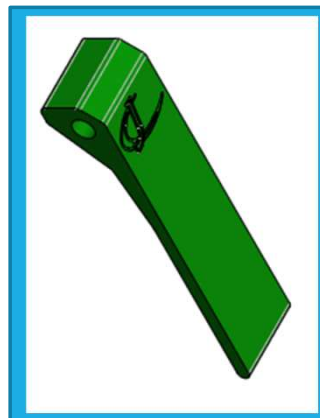
Black Lever

- *Ergonomic Design to assist Operator
 - *Engraved in any language
- Model #JP-S-LAB (Shown)**



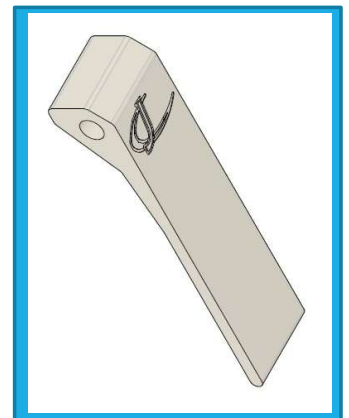
Red Lever

- *Ergonomic Design to assist Operator
 - *Engraved in any language
- Model #JP-S-LAR (Shown)**



Green Lever

- *Ergonomic Design to assist Operator
 - *Engraved in any language
- Model #JP-S-LAG (Shown)**

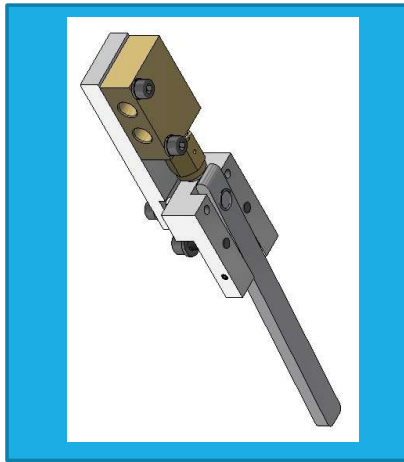


White Lever

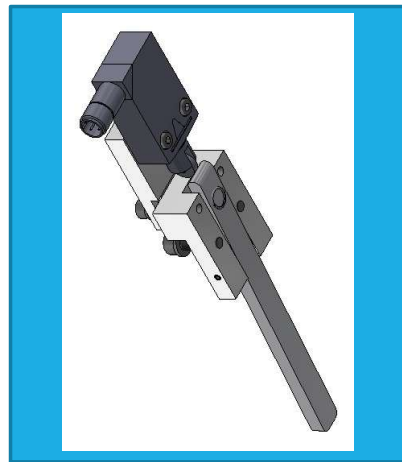
- *Ergonomic Design to assist Operator
 - *Engraved in any language
- Model #JP-S-LAW (Shown)**



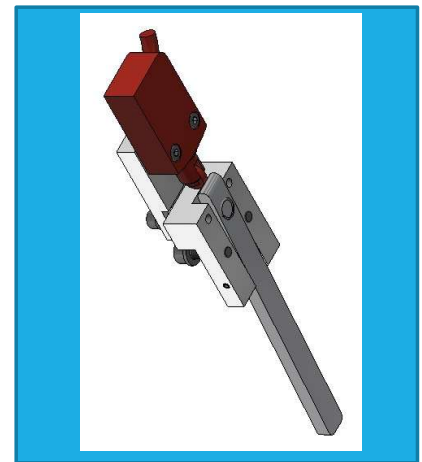
Control Handle Accessories



**Pneumatic (90 psi MAX)
Pendant Handle Trigger Kit**
*Ergonomic Design to assist Operator
*Engraved in any language
Model #JPTA4 (Shown)



**Electric 24VDC Pendant Handle
Trigger Kit**
*Ergonomic Design to assist Operator
*Engraved in any language
Model #JETA4 (Shown)



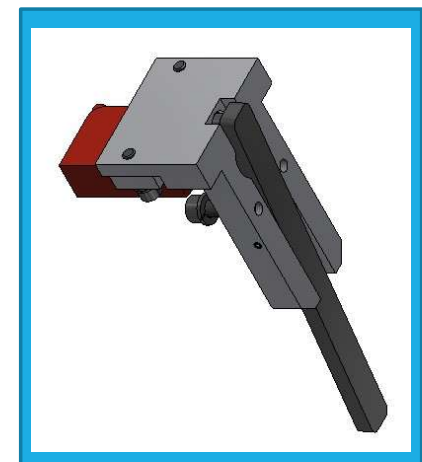
**Safety Electric 24VDC PLe Pendant Handle
Trigger Kit**
*Ergonomic Design to assist Operator
*Engraved in any language
Model #JSTA1 (Shown)



**Compact Pneumatic (90 psi max)
Pendant Handle Trigger Kit**
*Ergonomic Design to assist Operator
*Engraved in any language
Model #JPNTA1 (Shown)



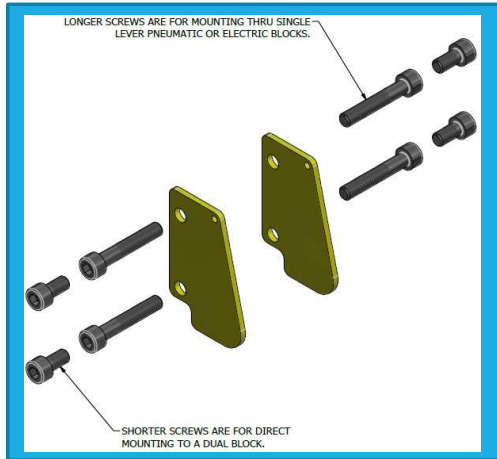
**Compact Electric 24VDC Pendant
Handle Trigger Kit**
*Ergonomic Design to assist Operator
*Engraved in any language
Model #JENTA1 (Shown)



**Compact Safety Electric 24VDC PLe
Pendant Handle Trigger Kit**
*Ergonomic Design to assist Operator
*Engraved in any language
Model #JSNTA1 (Shown)

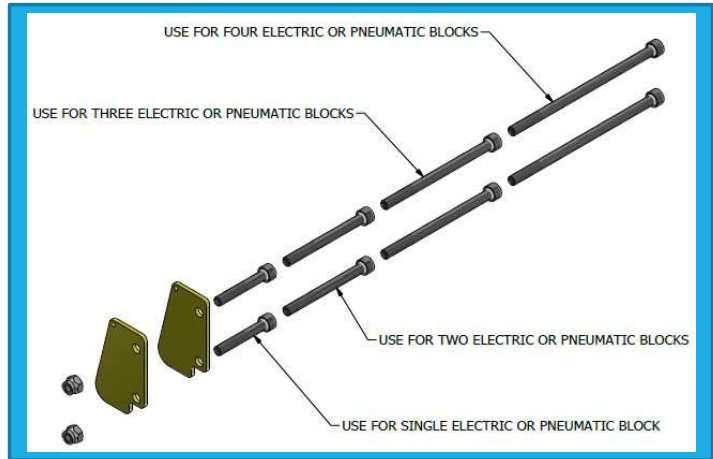


Control Handle Accessories



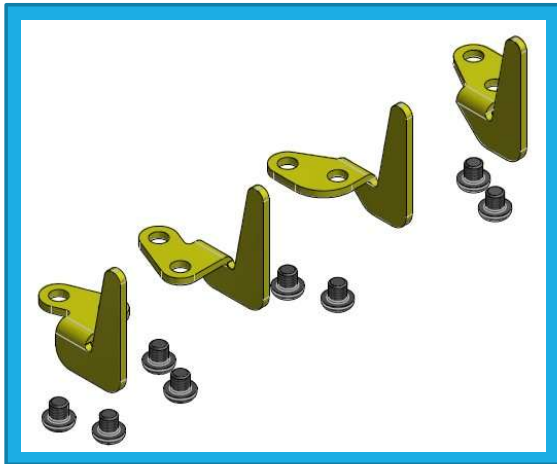
Jomat Side Shield Kit

*Protects the operator from inadvertently depressing the lever buttons when the control handle is clutched
Model #JP-S-AS-KIT-1 (Shown)

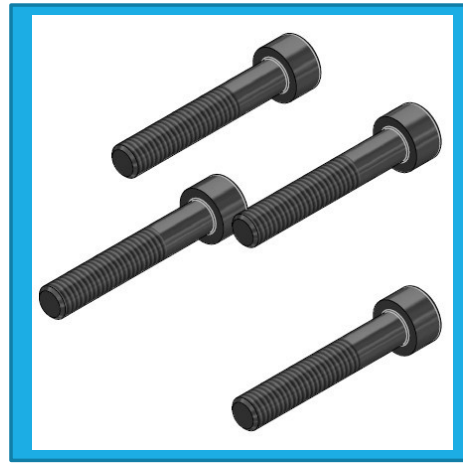


Jomat Side Shield Kit

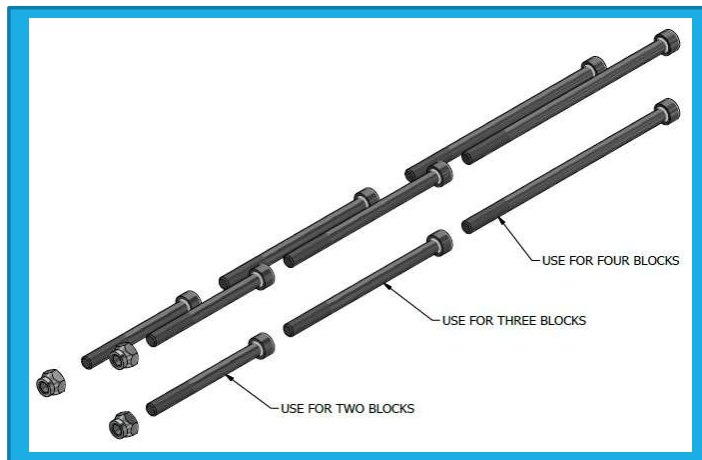
*Protects the operator from inadvertently depressing the lever buttons when the control handle is clutched
Model #JP-S-AS-KIT-2 (Shown)



Lever Divider Kit
Model #JP-S-BD-KIT (Shown)



Fastener Mounting Kit
 Single Block to Dual Pneumatic Block
Model #JP-S-AF-KIT (Shown)



Fastener Mounting Kit
 Single Block to Single Block
Model #JP-S-BF1-KIT (Shown)



Lever Marking and Ordering Information

Letter	Marking	Letter	Marking	Letter	Marking	Letter	Marking
A	UP	H	REVERSE	O	CLAMP	V	TILT BACK
B	DOWN	I	ENABLE UP-DN	P	UNCLAMP	W	RIGHT
C	RETRACT	J	ROTATE CW	Q	BRAKE ON	X	LEFT
D	EXTEND	K	ROTATE CCW	R	BRAKE OFF	Y	(NO MARKING)
E	TILT UP	L	COMMON	S	START	Z	CUSTOM
F	TILT DOWN	M	VACUUM ON	T	RESET		
G	FORWARD	N	VACUUM OFF	U	TILT FORWARD		

To order a Jomat control pendant, please use the code system with the letters on the matrix above for marking each lever for specific function. Starting from left to right using the corresponding number of the lever position. Use this code as a comment when ordering the selected part number for the pendant assembly.

Examples:

JP-DE00C-ST0 with 1O2P3S (Double Signal Pilot with Single Electric 24VDC Switch on the Right Pendant. Lever 1 for Clamp, Lever 2 for Unclamp and Lever 3 for Start).

JP-EE00C-EL0 with 1G2H (Double Electric 24VDC Switch Block Pendant with Electric Trigger. Lever 1 for Forward, Lever 2 for Reverse)

If a marking different from above table is needed, use "Z" letter and specify in a note the desired nomenclature.

Lever Colors:

Up= Green Lever

Down = Red Lever

Any other marking = Black Lever

Optional = White Lever



Pendant Ordering Instructions



Mounting Option

0 = No Mounting

M = With Mounting Clamp Collar Bkt

Under-The-Handle-Trigger:

ST = Standard Pendant with no Trigger

PN = With Latest Pneumatic Trigger

PC = With Latest Compact Pneumatic Trigger

EL = With Latest Electric Trigger

EC = With Latest Compact Electric Trigger

SA = With Latest Safety Electric Trigger

SC = With Latest Compact Safety Electric Trigger

Revision Level

C = Current Level

Block Type and Position: 4-character part number symbolizes each position of the blocks from left to right. (Maximum of 4 levers for pendant)

D= Double Signal Pilot Block

E= Single Electric 24VDC Switch Block

H= Double Front Exhaust (up & down) Block

L= Dual Variable Speed Electric Block

M= Single Variable Speed Electric Block

P= Single Signal Pilot Block

S= Single Safety Electric Switch 24VDC PLe Block

0 (Zero)= No block intended to be used

Examples:

EDP0 = 4 Lever Pendant; Double Signal Pilot with Single Electric 24VDC Switch on Left and Single Signal Pilot on Right.

EEEE = 4 Lever Pendant; Four Single Electric 24VDC Switches.

PD00 = 3 Lever Pendant; Double Signal Pilot with Single Signal Pilot on left.

JP - Jomat Standard Pendant

LP – Liftkon Standard Pendant

