

Pneumatic and Electric
Pendant Control Handles

Introduction

General Information3

Control Handle Series

Control Handle Series4

Control Options5

Control Handle Accessories6

Lever Ordering Information7

Pendant Ordering information8

Jomat Industries Warranty Information

Jomat warrants that its products and parts will meet all applicable specifications, performance requirements and be free from defects in material and workmanship for one (1) year, from the date of invoice unless otherwise noted.

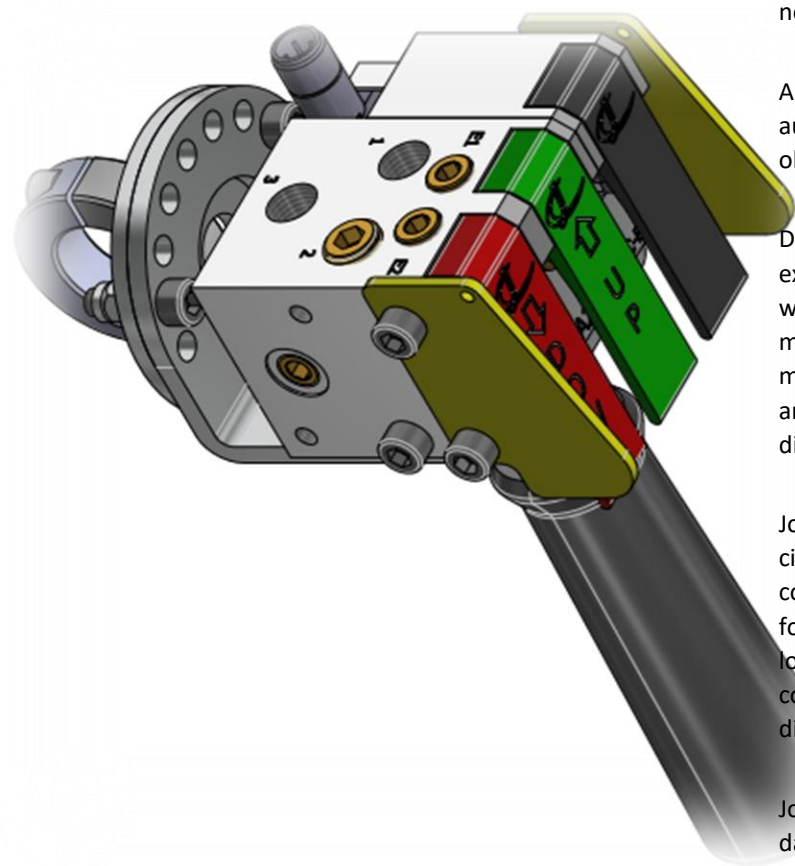
This warranty will not cover the negligence, misuse or defective operation caused by inadequate training of an operator, and or mis-adjustment or any alteration not approved by Jomat Industries. Not to exceed 90PSI. Jomat Industries obligation is limited to the replacement or repair of a Jomat product at a location designated by Jomat. The buyer is responsible for all associated internal reinstallation costs as well as freight changes to and from Jomat. Jomat Industries maximum liability will not exceed the contract price for a defective product.

Any modifications to a Jomat Product without written authorization from Jomat Industries will void warranty obligation.

Disclaimers: other than set forth herein, no other expressed warranties, and no implied warranties, oral written, including but not limited to the warranties of merchantability or fitness for a particular purpose, are made by Jomat Industries with respect to its products and all such warranties are hereby specifically disclaimed.

Jomat Industries shall not be liable under any circumstances for any incidental, special and/or consequential damages whatsoever, whether or not foreseeable, including but not limited to damages for lost profits and all such incidental, special and/or consequential damages are hereby also specifically disclaimed.

Jomat Industries will not be liable for any loss, injury or damage to persons or property, nor for damages of any kind resulting from failure or defective operation of any materials or equipment furnished hereunder.



General Information

Jomat Industries Pendants

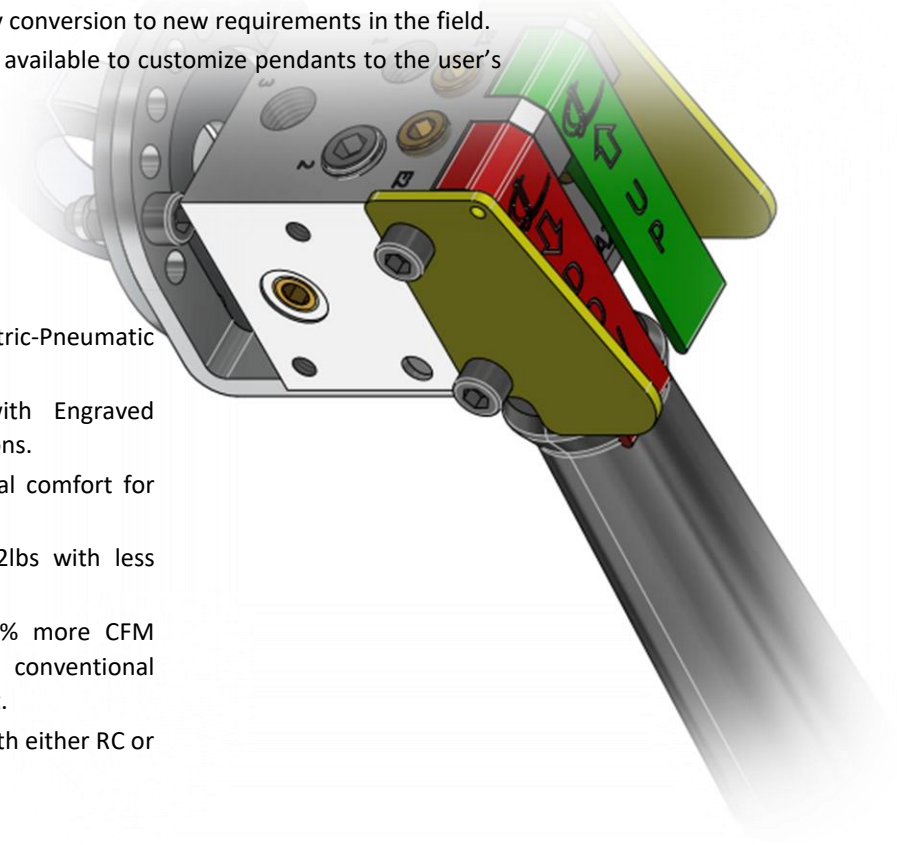
Jomat Industries line pendants integrate function and versatility, designed to be both visually and economically appealing. A dual valve pneumatic block that can function as a 2-way double signal pilot or a 3-way front exhaust valve, is the heart of the system. Simple piping variations are all that is required to switch from one control function to the next. Single pneumatic blocks are also available that can be used on their own or can be stacked with other components for multi-function capabilities. Single electric 24V blocks are available and can be used independently or can be stacked with other components for multi-function capabilities. Pneumatic and electric modules fit together seamlessly. Modular designs with interchangeable parts improve delivery time as well as service and maintenance requirements. It also allows easy selection of pendant parameters based on specific applications.

Features

- Dual and single button pneumatic modules.
- Dual button pneumatic modules function as Signal Pilot or Front Exhaust.
- Pneumatic modules can be stacked for multi-button applications and fed with a single airline.
- Electric single button modules can be stacked for multi-button applications
- Pneumatic and electric modules can be combined for multi-button applications.
- Pendants can be purchased fully assembled or as components.
- Modular assembly allows for easy conversion to new requirements in the field.
- A wide variety of accessories are available to customize pendants to the user's needs.

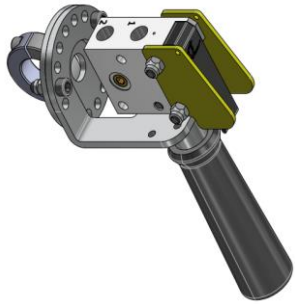
Benefits and Options

- Electric, Pneumatic and Electric-Pneumatic combinations available.
- Levers can be customized with Engraved callouts per customer specifications.
- Ergonomic levers provide optimal comfort for the operator.
- Lever push force is less than 2lbs with less overall thumb reach.
- Dual Poppet valve provides 30% more CFM with a smoother control over conventional Pendants available on the market.
- 1/8" and 1/4" G Threads work with either RC or BSPT male threads.



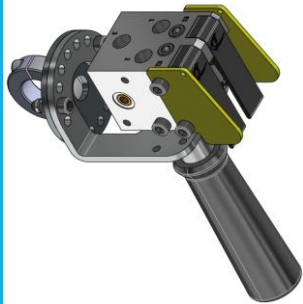
Control Handle Series

Pneumatic Control Handles



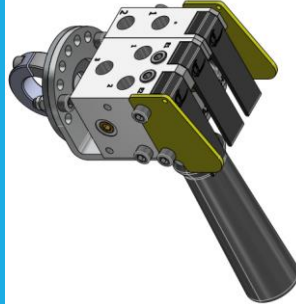
One (1) Button
Single Signal Pilot Valve Pendant

Model #JP-P000C-STM (Shown)



Two (2) Button
Double Signal Pilot Valve Pendant

Model #JP-D000C-STM (Shown)



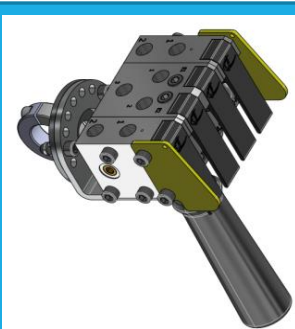
Three (3) Button
Double Signal Pilot w/Single
Signal Pilot on Right Valve
Pendant

Model #JP-DP00C-STM (Shown)



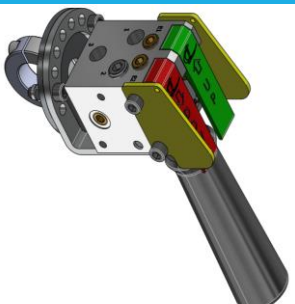
Three (3) Button
Double Signal Pilot w/Single
Signal Pilot on Left Valve
Pendant

Model #JP-PD00C-STM (Shown)



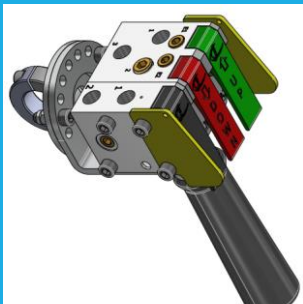
Four (4) Button
Double Signal Pilot w/Single
Signal Pilot on Both Sides Valve
Pendant

Model #JP-PDP0C-STM (Shown)



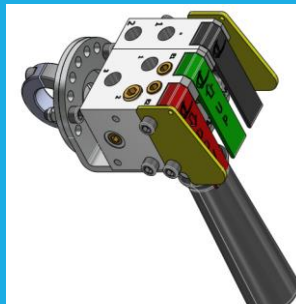
Two (2) Button
Double Front Exhaust Valve
Pendant

Model #JP-H000C-STM (Shown)



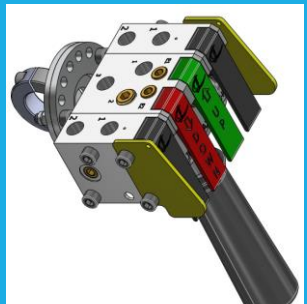
Three (3) Button
Double Front Exhaust w/Single
Signal
Pilot on Left Valve Pendant

Model #JP-PH00C-STM (Shown)



Three (3) Button
Double Front Exhaust w/Single
Signal Pilot on Right Valve
Pendant

Model #JP-HP00C-STM (Shown)



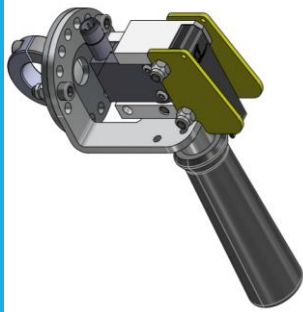
Four (4) Button
Double Front Exhaust w/Single
Signal Pilot on Both Side Valve
Pendant

Model #JP-PHP0C-STM (Shown)



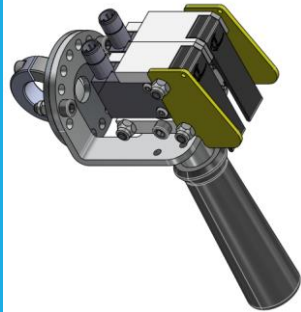
Control Handle Series

Electric Control Handles



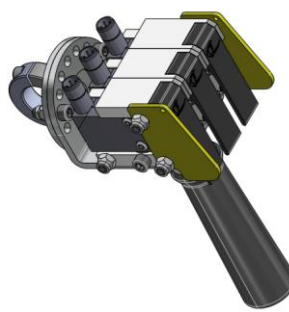
One (1) Button
Single Electric Switch Block
Pendant

Model #JP-E000C-STM (Shown)



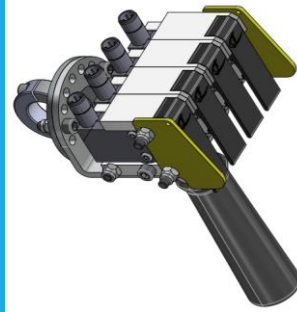
Two (2) Button
Double Electric Switch Block
Pendant

Model #JP-EE00C-STM (Shown)



Three (3) Button
Triple Electric Switch Block
Pendant

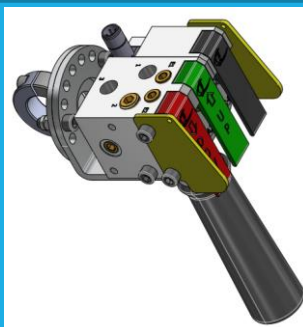
Model #JP-EEE0C-STM (Shown)



Four (4) Button
Quad Electric Switch Block
Pendant

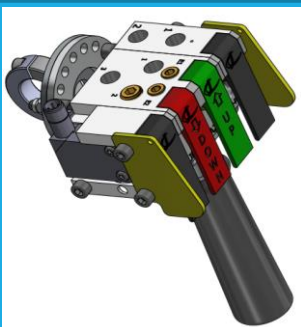
Model #JP-EEEEC-STM (Shown)

Electric/Pneumatic Control Handles



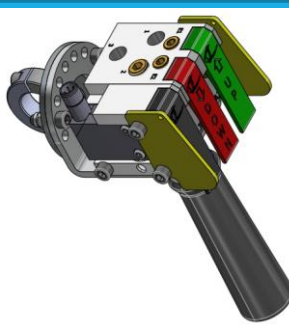
Three (3) Button
Double Front Exhaust w/Single
Electric Switch on Right Valve
Pendant

Model #JP-HE00C-STM (Shown)



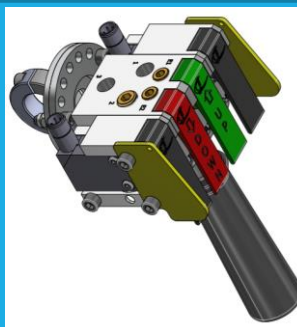
Four (4) Button
Double Front Exhaust w/Single
Electric Switch on Left Single
Signal Pilot on Right Valve
Pendant

Model #JP-EHP0C-STM (Shown)



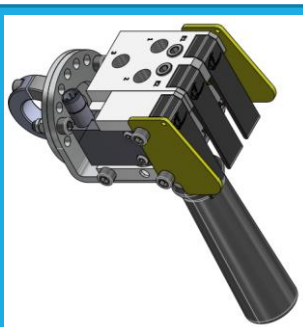
Three (3) Button
Double Front Exhaust w/Single
Electric Switch on Left Valve
Pendant

Model #JP-EH00C-STM (Shown)



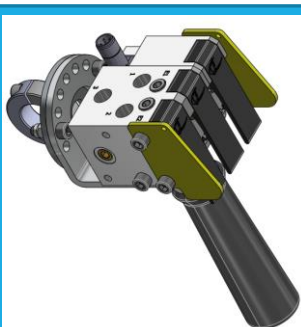
Four (4) Button
Double Front Exhaust w/Single
Electric Switch on Both Sides
Valve Pendant

Model #JP-EHE0C-STM (Shown)



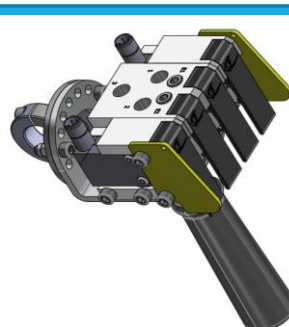
Three (3) Button
Double Signal Pilot w/Single
Electric Switch on Left Valve
Pendant

Model #JP-ED00C-STM (Shown)



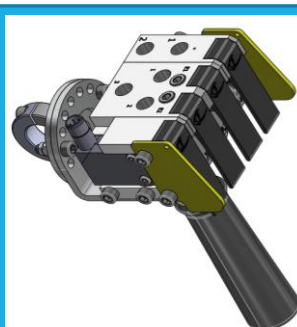
Three (3) Button
Double Signal Pilot w/Single
Electric Switch on Right Valve
Pendant

Model #JP-DE00C-STM (Shown)



Four (4) Button
Double Signal Pilot w/Single
Electric Switch on Both Sides
Valve Pendant

Model #JP-EDE0C-STM (Shown)



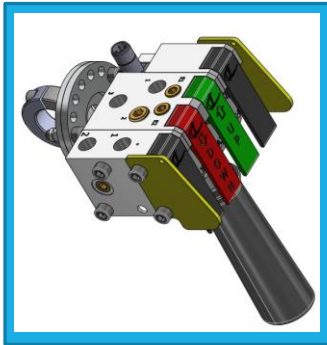
Four (4) Button
Double Signal Pilot w/Single
Electric Switch on Left & Single
Signal Pilot on Right Valve
Pendant

Model #JP-EDP0C-STM (Shown)



Control Handle Series

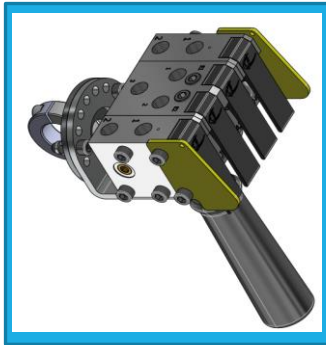
Electric/Pneumatic Control Handles



Four (4) Button

Double Front Exhaust w/Single
Signal Pilot on Left Single Electric
on Right Valve Pendant

Model #JP-PHE0C-STM (Shown)



Four (4) Button

Double Signal Pilot w/Single
Signal Pilot on Left Single Electric
Switch on Right Valve Pendant

Model #JP-PDE0C-STM (Shown)



Dead Handle Pendant

Model #JP-0000C-STM (Shown)

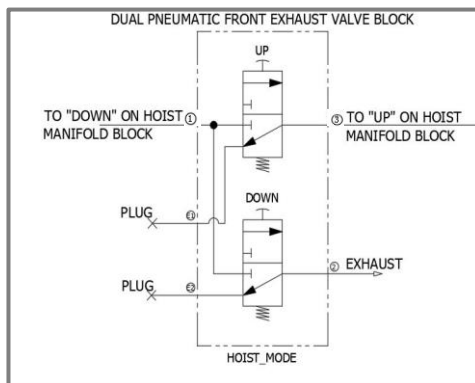
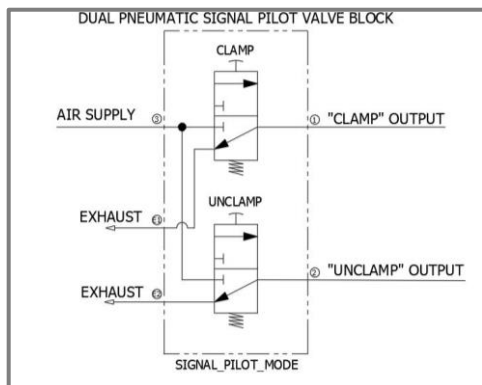
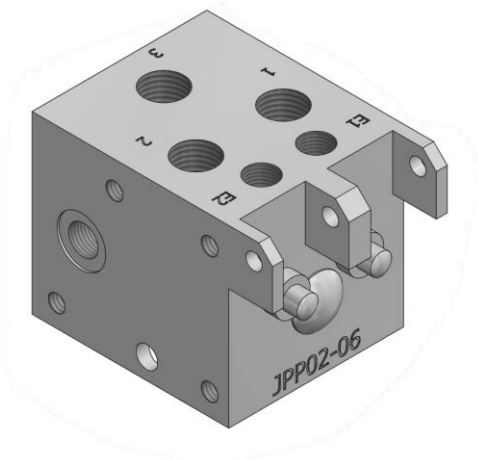


Control Options

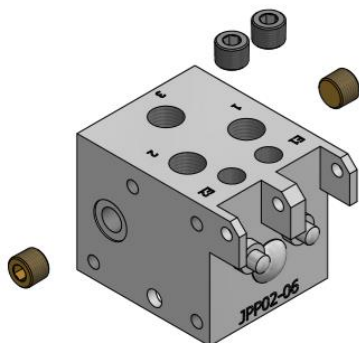
Functional and Versatile Control Options

Jomat Industries Control Handles are designed for functionality and versatility. Equipped for handling precision through a variety of possibilities.

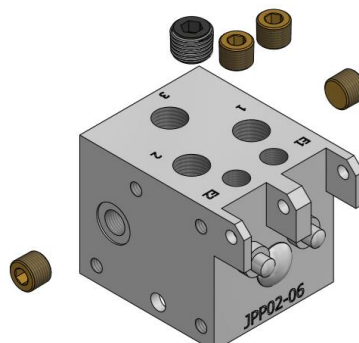
Double Lever – Dual Function Valve Block



PLUG KIT



Dual Pneumatic Signal Pilot Valve Block
Model #JP-S-BBD (Shown)



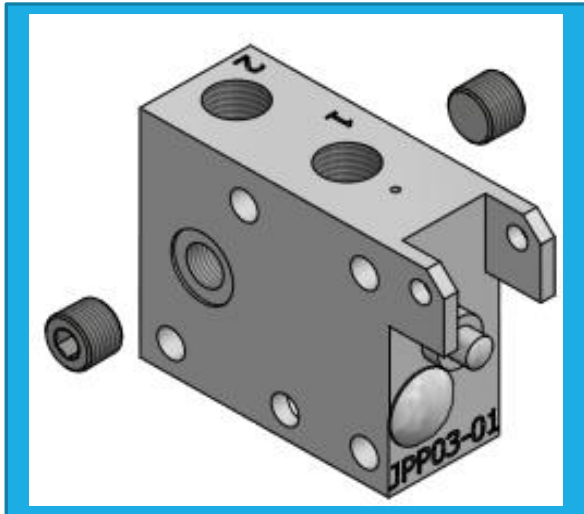
Dual Pneumatic Front Exhaust Valve Block
Model #JP-S-BBH (Shown)



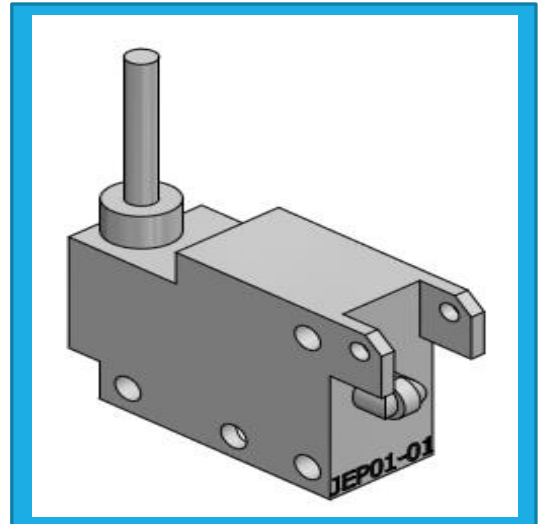
Control Options

Functional and Versatile Control Options

Single Lever – Valve Block



Jomat's Single Signal Pilot Valve Block
with out Lever
Model #JP-S-BBP (Shown)



Jomat's Single Electric Block with out
Lever
Model #JP-S-BCE (Shown)



Control Options

Functional and Versatile Control Options

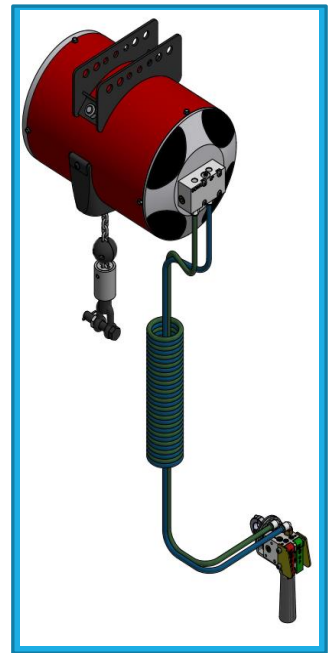
Hoist Manifold Blocks



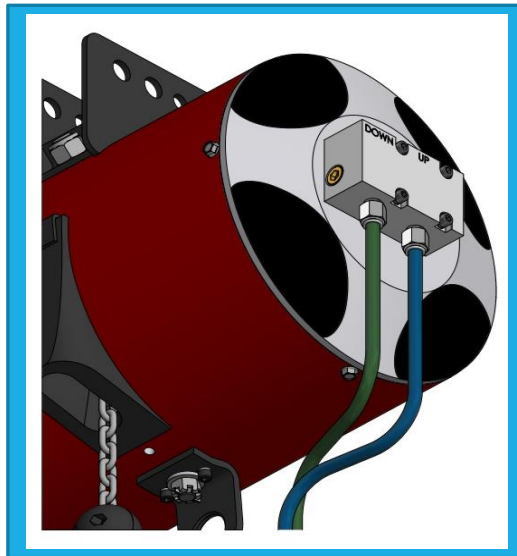
Manifold Block
With 10mm Straight Hose
and Control Pendant
Model #JH-M0H1P1A (Shown)

Features and Benefits

- Up/Down Flow Controls with Built in Safety Check for Air Supply
- Will work with most Industry Balancers
- 3/8" and 1/4" G thread ports work with either RC or BSPT male threads.
- Built in Balance Regulator



Manifold Block
With 10mm Coiled Hose
And Control Pendant
Model #JH-M0H2P1A (Shown)



Manifold Block
Model #JH-M00000A (Shown)



Control Options

Functional and Versatile Control Options

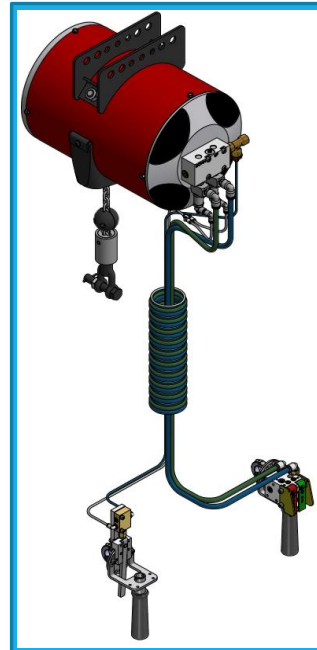
Hoist Manifold Blocks with P.O. Check Valve Kit



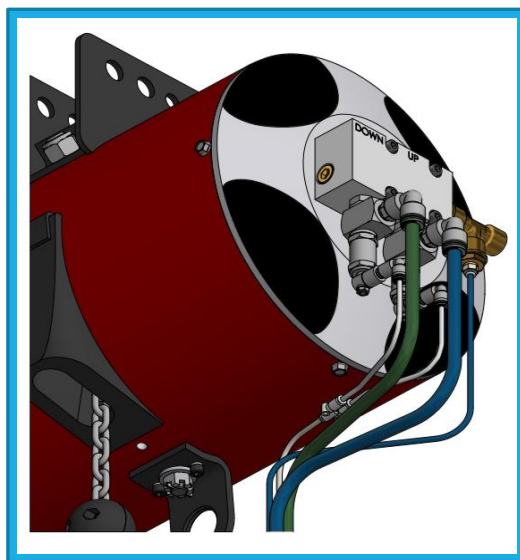
Manifold Block
10mm & 4mm Straight Hoses
and Control Pendants
Model #JH-MCH3P2A (Shown)

Features and Benefits

- Up/Down Flow Controls with Built in Safety Check for Air Supply
- P.O. Check Valves per FORD SPEC
- Will work with most Industry Balancers
- 3/8" and 1/4" G thread ports work with either RC or BSPT male threads.
- Built in Balance Regulator



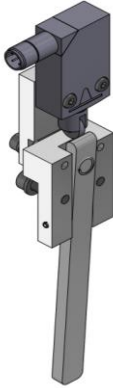
Manifold Block
10mm & 4mm Coiled Hoses
and Control Pendants
Model #JH-MCH4P2A (Shown)



Manifold Block and P.O. Check Valve Kit
Model #JH-MC0000A (Shown)



Control Handle Accessories



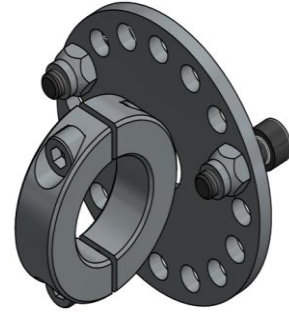
**Electric Pendant Handle
Trigger Kit**

*Ergonomic Design to assist
Operator
*Engraved in any language
Model #JETA4 (Shown)



**Pneumatic Pendant Handle
Trigger Kit**

*Ergonomic Design to assist
Operator
*Engraved in any language
Model #JPTA4 (Shown)



Universal 1" Handle Mount

*Allows Control Handle to be
mounted in a fixed position.
* Hole Pattern Allows for 360 degree
rotational mounting.
Model #JM-UHM-A11 (Shown)



Jomat Handle Assembly

*Ergonomic Design to assist Operators Grip
*Allows for a rotational position of the handle around a vertical axis
Model #JP-S-BH (Shown)



Black Lever

*Ergonomic Design to assist Operator
*Engraved in any language
Model #JP-S-LAB (Shown)



Red Lever

*Ergonomic Design to assist Operator
*Engraved in any language
Model #JP-S-LAR (Shown)

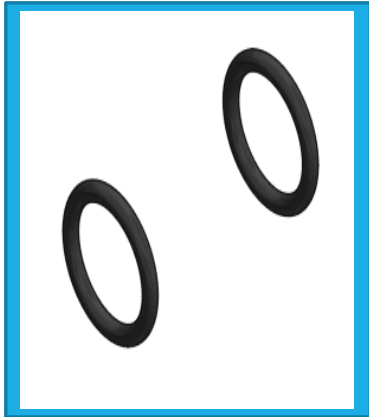


Green Lever

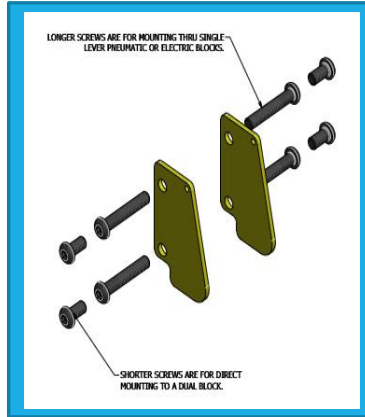
*Ergonomic Design to assist Operator
*Engraved in any language
Model #JP-S-LAG (Shown)



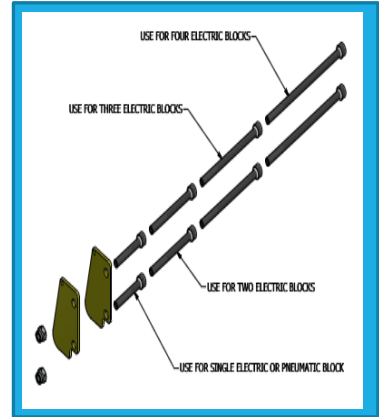
Control Handle Accessories



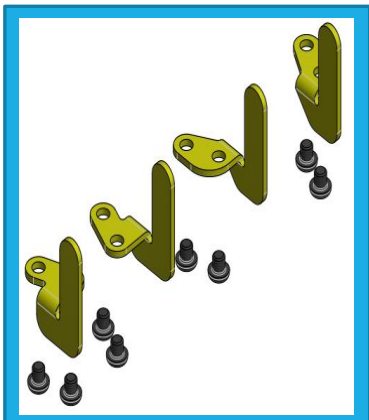
Manifold Valve Block Seal Kit
Model #JP-S-AG-KIT (Shown)



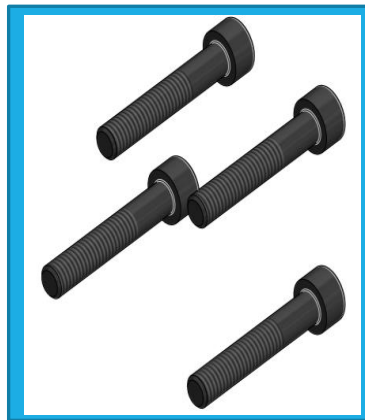
Jomat Side Shield Kit
 *Protects the operator from inadvertently depressing the lever buttons when the control handle is clutched
Model #JP-S-AS-KIT-1 (Shown)



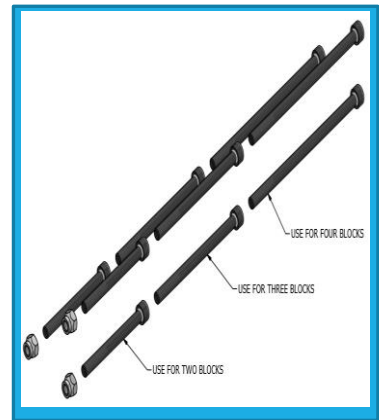
Jomat Side Shield Kit
 *Protects the operator from inadvertently depressing the lever buttons when the control handle is clutched
Model #JP-S-AS-KIT-2 (Shown)



Lever Divider Kit
Model #JP-S-BD-KIT (Shown)



Fastener Mounting Kit
 Single Block to Dual Pneumatic Block
Model #JP-S-AF-KIT (Shown)



Fastener Mounting Kit
 Single Block to Single Block
Model #JP-S-BF1-KIT (Shown)



Lever Marking and Ordering Instructions

Lever Markings & Ordering Instructions

Letter	Marking	Letter	Marking	Letter	Marking	Letter	Marking
A	Up	G	Forward	M	Vac On	S	Start
B	Down	H	Reverse	N	Vac Off	T	Reset
C	Retract	I	Enable Up/Dn	O	Clamp	U	Tilt Forward
D	Extend	J	Rotate CW	P	Unclamp	V	Tilt Back
E	Tilt Up	K	Rotate CCW	Q	Brake On	Z	Other
F	Tilt Down	L	Common	R	Brake Off	Blank	No Marking

To order a Jomat control pendant, please use the code system with the letters on the matrix above for marking each lever for specific function. Starting from left to right using the corresponding number of the lever position. Use this code as a comment when ordering the part number selected for the pendant assembly.

Examples:

JP-DE00A-ST0 with 1O2P3S (One Double single pilot pendant with one single electric switch on the right. Lever 1 for Clamp, lever 2 for Unclamp and lever 3 for Start).

JP-EE00A-EL0 with 1G2H (Double Electric Switch Block Pendant with Electric Trigger for Left side. Lever 1 for Forward, Lever 2 for Reverse)

If other marking different from above table is needed, use "Z" letter and specify in a note the desired nomenclature.

Lever Colors:

Up= Green Lever

Down = Red Lever

Any other marking = Black Lever



Trigger Marking and Ordering Instructions

Trigger Markings & Ordering Instructions

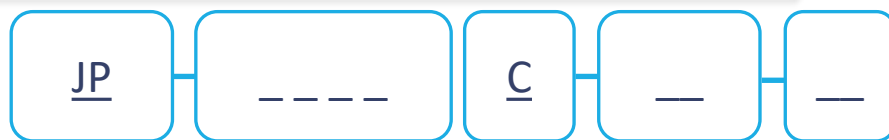
Letter	Marking	Letter	Marking
I	Enable Up/Down	Z	Other
S	Start		

To order a Jomat control pendant, please use the code system with the letters on the matrix above for marking the trigger for specific function. Use this code as a comment when ordering the part number selected for the pendant assembly.

If other marking different from above table is needed, use "Z" letter and specify in a note the desired nomenclature.



Pendant Ordering Instructions



Mounting Option

0 = No Mounting
M = Clamp Collar
Bracket

Under-The-Handle-Trigger:

ST = Standard Pendant with no Trigger
EL = Electric Trigger
PN = Pneumatic Trigger

Revision Level

C = Current Level

Block Type and Position: 4 character part number symbolizes each position of the blocks from left to right. (Maximum of 4 levers for pendant)

E= Single Electric Switch

P= Single Signal Pilot Valve

D= Double Signal Pilot Valve

Configuration does not allow for (2) D Blocks

Use (1) Double and (2) Single for application (1) D = (2) P

H= Double Front Exhaust Valve (Up & Down)

0 (Zero)= No block intended to be used

Examples:

EDPO = 4 Lever pendant; Double Signal Pilot block with one Single Electric Switch on the left and one single signal pilot valve on the right.

EEEE = 4 Lever pendant; Four Single Electric Switches

PD00 = 3 Lever pendant; Double Signal Pilot block with one Single Signal Pilot on the left.

Jomat Standard Pendant

